

Press Release for immediate release

Tschudi Logistics Completes the Delivery of Valmet Tissue's Largest Yankee Dryer: A Logistical Masterpiece

October 22, 2024

At Tschudi Logistics, we pride ourselves on tackling the most demanding projects. Our latest achievement? Delivering Valmet Tissue's largest Yankee dryer to date - a large and heavy piece of equipment with a 22-foot diameter and weighing 206 tons. This intricate operation was not just a transport - it was a logistical masterpiece, involving meticulous planning, multiple suppliers, and the expertise of our dedicated team.



A Journey of Precision and Expertise

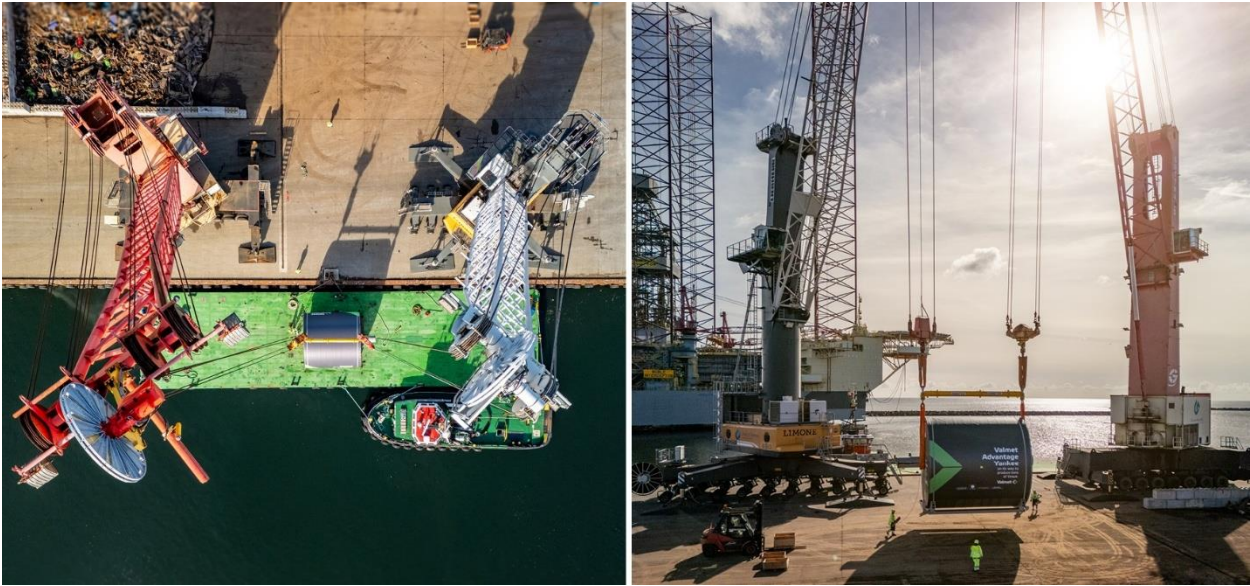
The operation began in early September under the sunny skies of Karlstad, Sweden. Due to a number of operational limitations in Lake Vänern, we had to think outside the box — using a barge for the roll-on loading. From there, the Yankee dryer embarked on its multi-stage journey, which would take it across several countries and involve multiple modes of transport.



Our team's high level of expertise was crucial in coordinating every step of this project. We worked with numerous suppliers, each handpicked for their specific capabilities, ensuring the complex logistical puzzle came together seamlessly. Traveling to several key sites along the way, we were on the ground to ensure everything went according to plan.

Transshipment from barge to coaster vessel

Upon arrival in Grenaa, Denmark, the Yankee dryer was transhipped using a twin-lift operation—a precise and demanding task given the size and weight of the cargo. From there, it was loaded onto a coaster vessel for the next leg of the journey to Le Havre, France.

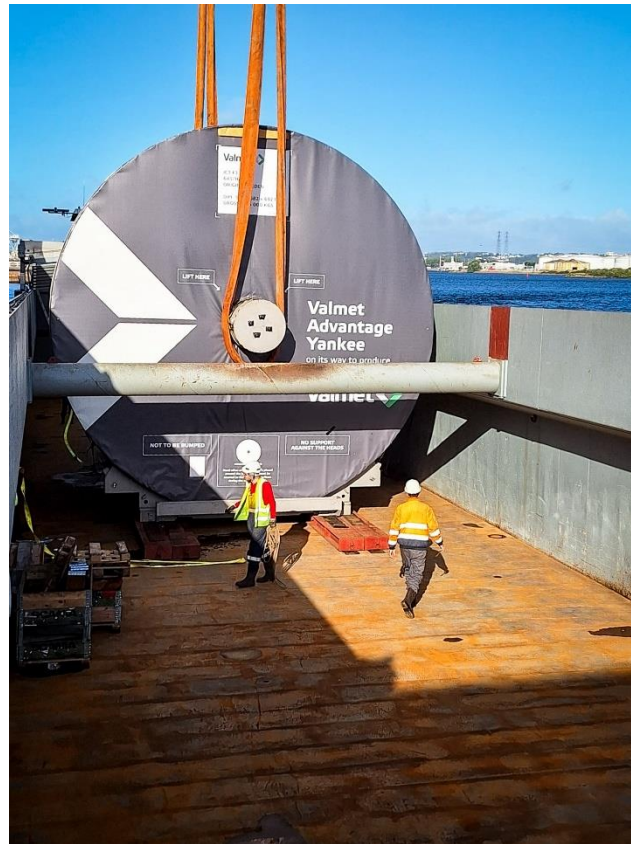


The coordination between various teams and equipment was essential to ensure everything ran smoothly. Thanks to the high level of collaboration between our team and local suppliers, the Yankee was safely transferred onto the vessel.

Navigating the River Seine and Beyond

The next stage required navigating the River Seine by barge, passing through the iconic city of Paris on the way to Corbeil. There, the massive Yankee dryer was lifted once again and placed on a trailer for the final stretch to ICT Papermill in Pannes.

Our Project Managers traveled to several sites, overseeing the transshipments and ensuring the precision of each step. Their commitment to excellence and attention to detail were key to keeping the operation on track and according to the Project Plan.



Overcoming Obstacles on the Road

The 115-kilometer road journey from Corbeil to Pannes took 10 days and tested every aspect of our expertise. Along the way, the Yankee had to pass over two bridges using specially built flyover ramps. At another point, we used a Self-Propelled Modular Transporter (SPMT) to cross yet another bridge, before transferring the load back to the modular trailer. These intricate solutions were possible only thanks to the expertise of our team and the close collaboration with our trusted suppliers.



Final Arrival at ICT Papermill

Finally, after 35 days in transit, the Yankee dryer reached its final destination at ICT Papermill in Pannes, passing through the gates late evening, 10th October. Despite the complexity and scale of this transport, our team ensured that the dryer arrived safely, on time, and in perfect condition.

A Showcase of Multimodal Expertise

This project stands as a testament to Tschudi Logistics' ability to manage the most complex logistics operations. It required our team to navigate the complexity of the project, from handling multiple transshipments to ensuring on-site precision at every stage. Our team traveled extensively to monitor operations, working hand-in-hand with suppliers across countries and modes of transport.

At Tschudi Logistics, we go the extra mile—quite literally—to deliver innovative, tailor-made solutions for our clients. If your company is looking for a reliable partner for challenging logistics, we are here to ensure that no matter how complex the project, it will be delivered safely and on time.

For more information, contact:

Jimmy Carlsson, Head of Projects & Logistics

jc@tschudilogistics.com

+46 705 48 18 41

Tschudi Logistics AB
Östra Larmgatan 15-21, 411 08,
Gothenburg, Sweden

www.tschudilogistics.com